



PEARSON TECHNOLOGIES
I N C O R P O R A T E D

4671 Hickory Bend Drive Acworth, GA 30102 USA 011 (770) 490-9991
fiberguru@ptnowire.com www.ptnowire.com

14-Aug-15

Crossword Puzzles For Fiber Optic Terminology And Basic Facts

This document is a training aid for fiber installers. In addition, it prepares installers for taking the Fiber Optic Association [FOA] Certified Fiber Optic Technician [CFOT] certification examination. This crossword includes the basics of the language of fiber optics and many of the subtleties that one learns from extensive fieldwork.

It is based on Professional Fiber Optic Installation, v.9 [© 2014] and on the latest CFOT certification examination. [Professional Fiber Optic Installation, v.9, The Essentials For Success.](#)

Other texts that have answers are:

[Mastering The OTDR-Trace Acquisition And Analysis,](#)

[Mastering Fiber Optic Connector Installation: A Guide To Low Loss, Low Cost, And High Reliability.](#)

To receive a .pdf with the answers, send an email to the address above. Put "Crossword 2015 Answers" in the subject.

Have fun.

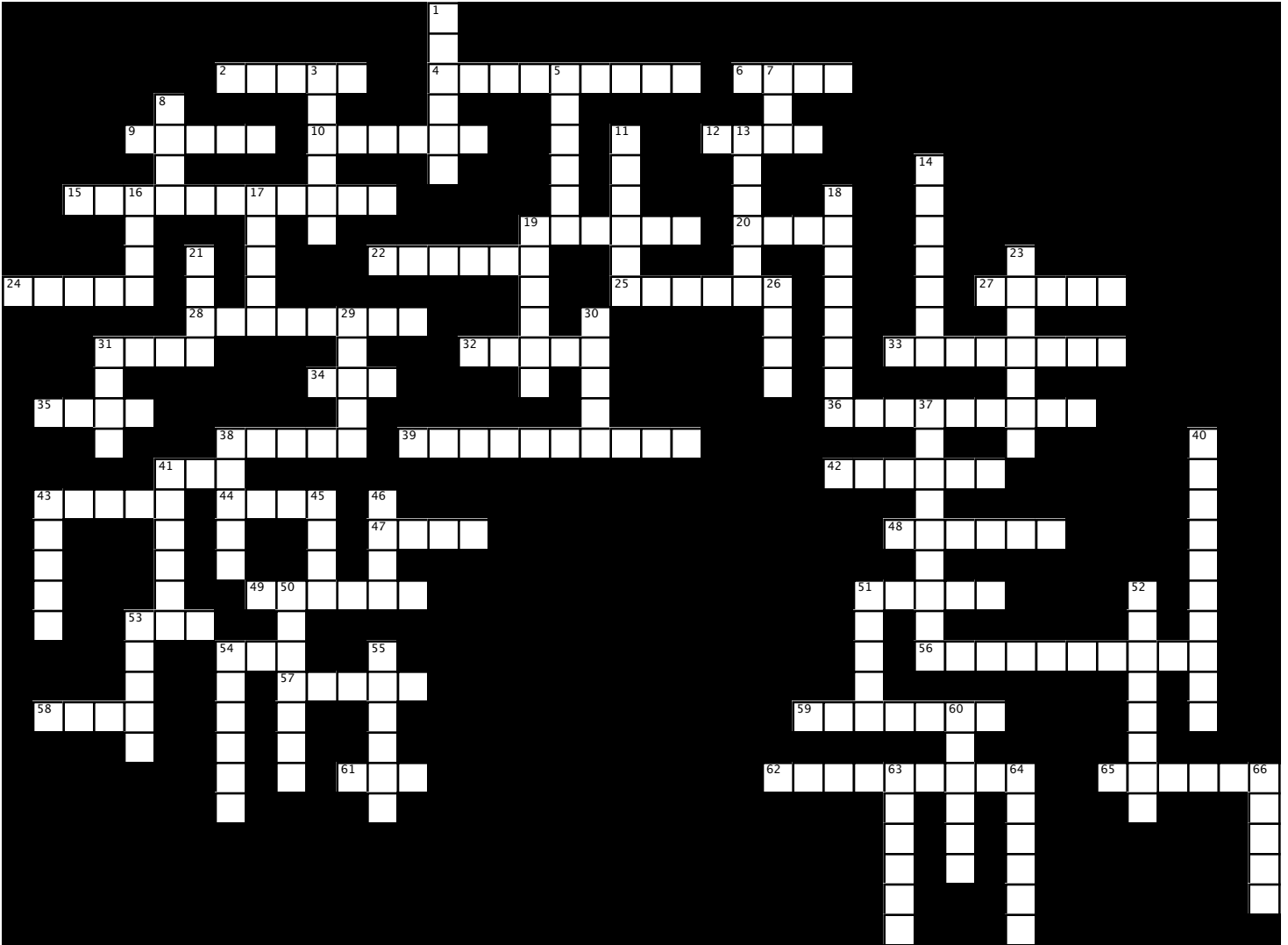
Best Regards,



Eric R. Pearson, CFOS/C/T/S/I
President

Cables

PROFESSIONAL FIBER OPTIC INSTALLATION, V.9
Chapters 4, 10, 11 (© Pearson Technologies Inc.)



Across

2. a _____ tube contains only one fiber
4. a type of cable containing both conductors and fibers
6. to avoid fiber breakage, the installer must limit the _____ applied to the cable
9. fifth color in the color code sequence
10. the first word of the first layer placed on the fiber by the cable manufacturer
12. an (acronym) cable is (40 Down) and can be installed anywhere inside a building and be in compliance with the electrical code
15. subjecting a cable to an excessively high or low temperature results in increased _____
19. ninth color in the color code sequence
20. an (acronym) cable is (40 Down) and can be installed in a single floor or between floors inside a building and be in compliance with the electrical code

Down

1. the outermost layer of a cable
3. a cable with both multimode and singlemode fibers
5. second color in the color code sequence
7. an (acronym) cable is (40 Down) and can be installed in a single floor inside a building and be in compliance with the electrical code
8. first color in the color code sequence
11. tenth color in the color code sequence
13. when being terminated, a multiple fiber per tube cable requires a _____ kit on the fibers
14. the third word of (54 Across) is _____
16. the second word of the first layer placed on the fiber by the cable manufacturer
17. the structural element that provides crush and rodent resistance
18. exceeding the installation load can result in fiber _____
19. _____ color of jacket on indoor singlemode cables

Across

22. first word of a method to reduce load when pulling cable into a conduit
24. a _____ tube can contain more than one fiber
25. during installation, the minimum bend radius of a cable is ____ times the cable diameter
27. second word of a method to reduce load when pulling cable into a conduit
28. the first word of the structural element that prevents excessive stretching of the fibers
31. the one hundred and thirty first fiber in loose tube cable has a _____ color
32. the _____ term bend radius is larger than the (43 Down) term bend radius.
33. the name of the most commonly used indoor cable type
34. seventh color in the color code sequence
35. the time to prepare a cable with (54 Across) is _____ than that with (41 Across) and (41 Down)
36. the cable (28 Across) (42 Across) is attached to the _____ at the cable ends
38. fourth color in the color code sequence
39. a common (28 Across) (42 Across) is often white and is
41. old outdoor cables achieved moisture resistance with _____ inside buffer tubes
42. the second word of the structural element that prevents excessive stretching of the fibers
43. the first word of (54 Across) is _____
44. twelfth color in the color code sequence
47. the designation of an indoor cable that has conductive elements and can be placed anywhere
48. cable structural material used as a manufacturing aid or to keep cable round
49. color of jacket on indoor multimode cables
51. the most common color of an outdoor cable
53. after installation, the minimum bend radius of a cable is ____ times the cable diameter
54. current generation cables achieve moisture resistance with this (acronym)
56. maximum number of fibers in a (63 Down) is
57. fibers in a loose tube are identified by their _____
58. a common jacket material in outdoor cables
59. a cable with all fibers in a single (24 Across) (16 Down) is a _____ loose tube cable
61. acronym for the National Electric Code
62. the second word of (54 Across) is _____
65. indoor singlemode cables have the color _____

Down

21. eleventh color in the color code sequence
23. the cable bend radius is a _____ value
26. in a (59 Across) (24 Across) (16 Down) cable, the fiber bundles are held together by a color coded _____
29. third color in the color code sequence
30. a conductive (28 Across) (42 Across) is
31. the one hundred and thirty first fiber in loose tube cable has a buffer tube with a _____ color
37. a material used to reduce load when pulling cable into a conduit
38. eighth color in the color code sequence
40. a cable which has no conductive materials is _____
41. old outdoor cables achieved moisture resistance with _____ outside buffer tubes
43. during installation, the (54 Down) between the pull rope and the cable has a _____ pin to avoid fiber breakage.
45. color of jacket on indoor LO cables
46. when stored, a cable cannot be bent smaller than its _____ term radius.
50. structural element that eases removal of jacket
51. a group of fibers that is installed into a preinstalled tube with air pressure is known as _____ fiber
52. when entering a building, cable with (17 Down) must be
53. the number of colors used to indicate fiber type of indoor cables
54. during installation, the installer places a _____ between the pull rope and the cable to avoid twisting.
55. when being spliced mid-span, cable with (17 Down) must be
60. a common (28 Across) (42 Across) is _____ yarn
63. twelve fibers aligned on a tape form a _____
64. the number of fibers commonly found in a (24 Across) buffer tube
66. sixth color in the color code sequence